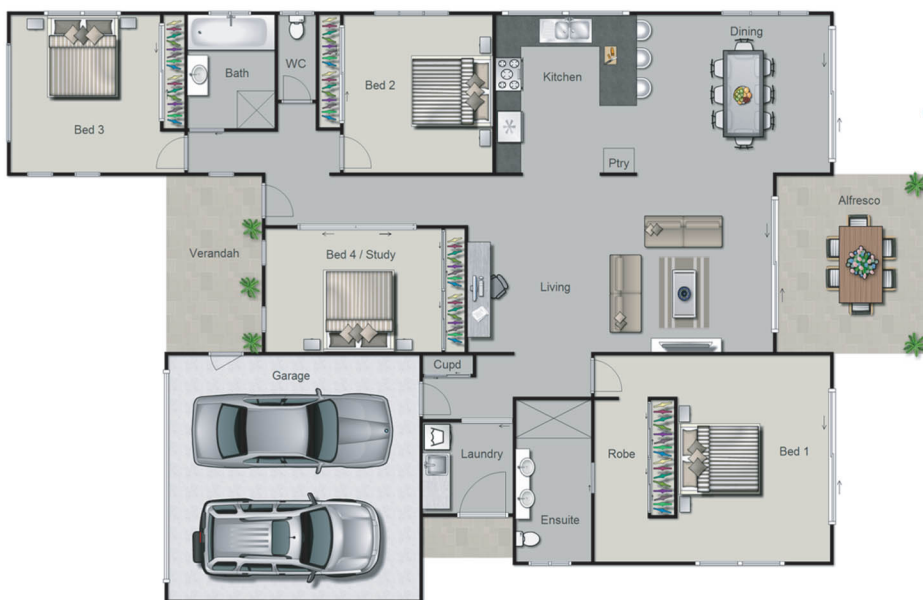




The Arundel



Floor plan

28 squares on 3,176m² lot
\$600,000

GOLD PACKAGE INCLUSIONS:

- Designer kitchen and bathrooms
- European appliance package
- Raked ceilings throughout living area
- Termite resistant timber frames
- Solar hot water system

OPTIONAL EXTRAS: (included in display home)

- Double glazed windows
- Essastone bench tops & glass splashbacks
- **FREE kitchen appliance upgrade**
- Carpets to bedrooms
- Window coverings throughout
- Ducted air conditioning
- Driveway & landscaping
- **Finance available.** Conditions apply.

Living: 182m² Alfresco area: 30m²
Decking: 12m² Garage: 37m² TOTAL: 261m²

www.bayridge.com.au

For more details, visit our Display Home at the corner of Kings and Princes Highways, open 10.30am – 6pm Thursday through Monday during the summer, or contact LJH Batemans Bay today on 02 4472 8900.



A Division of LJ Hooker Land Marketing



Batemans Bay