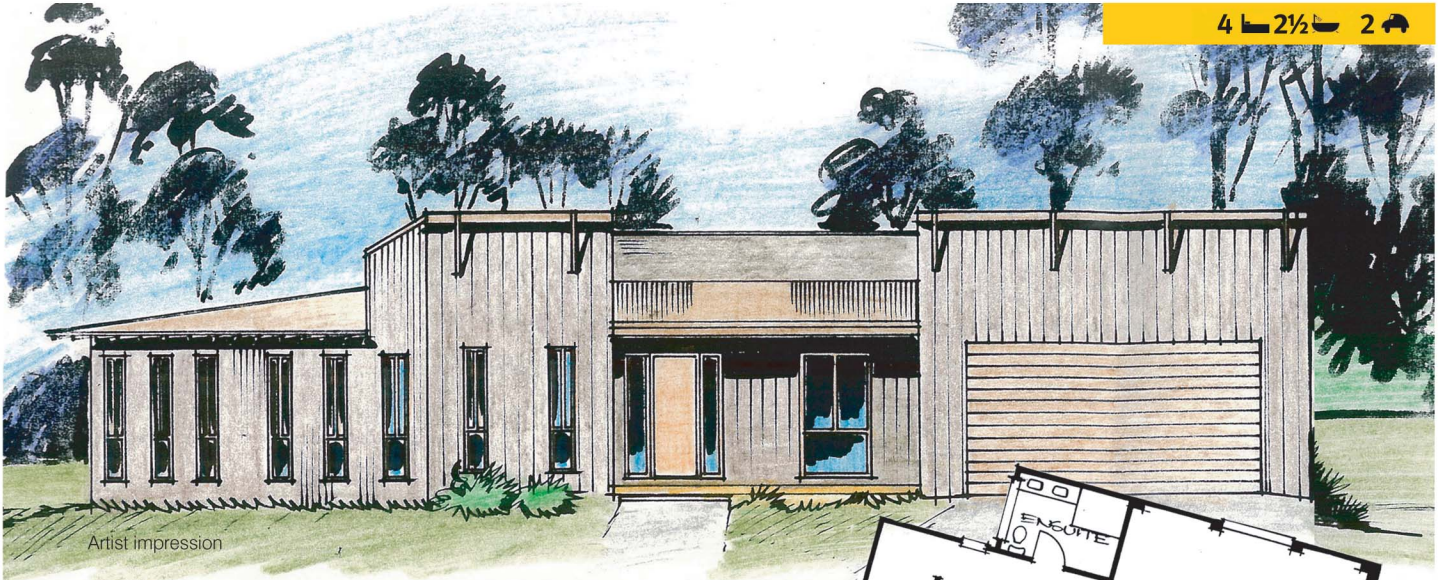




**BAY RIDGE**  
BATEMANS BAY

# Lot 207 Bayridge Drive

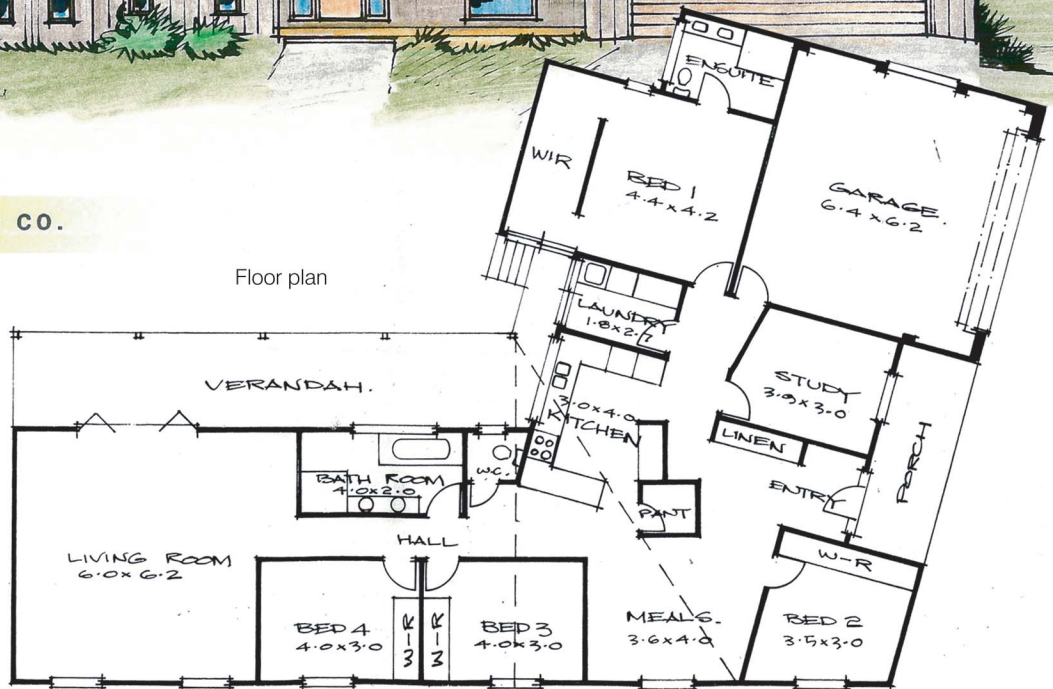
4 2½ 2



Artist impression

**BAY BUILDING CO.**

Floor plan



**34 squares on 3,486m<sup>2</sup> lot**  
**\$671,000\***

Living: 220m<sup>2</sup>

Verandahs: 46m<sup>2</sup>

Garage: 39m<sup>2</sup>

TOTAL: 305m<sup>2</sup>

**FEATURES & INCLUSIONS:**

- Metal feature bracing
- Unique angled house to suit block & aspect
- Alfresco verandah dining
- 10,000L water tank
- Timber poled verandah
- Dual basin vanities
- Stainless steel appliances
- Raised ceilings
- Auto panelift garage door

[www.bayridge.com.au](http://www.bayridge.com.au)

For more details, visit our Display Home at the corner of Kings and Princes Highways, open 10.30am – 6pm Thursday through Monday during the summer, or contact LJH Batemans Bay today on 02 4472 8900.

A Division of LJ Hooker Land Marketing



Batemans Bay

\* Subject to siting and council approval. Conditions apply.